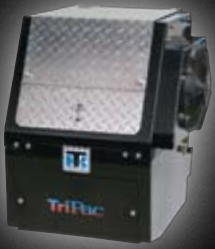




Run Smart

FREIGHTLINER

TRIPAC™ AUXILIARY POWER UNIT
POWERED BY THERMO KING®



A COMPLETE AUXILIARY IDLE REDUCTION
AND TEMPERATURE MANAGEMENT SYSTEM.

Power the cab without fueling the expenditures column.

Long-haul trucks waste millions of gallons of fuel each year idling their engines to heat, cool and power the cab, or to keep the engine block warm. The TriPac™ Auxiliary Power Unit (APU), powered by Thermo King®, is an auxiliary heating and cooling temperature management system that allows drivers to reduce unnecessary idling and conserve diesel fuel, while still resting comfortably.

The TriPac APU is a complete, multi-functional system that:

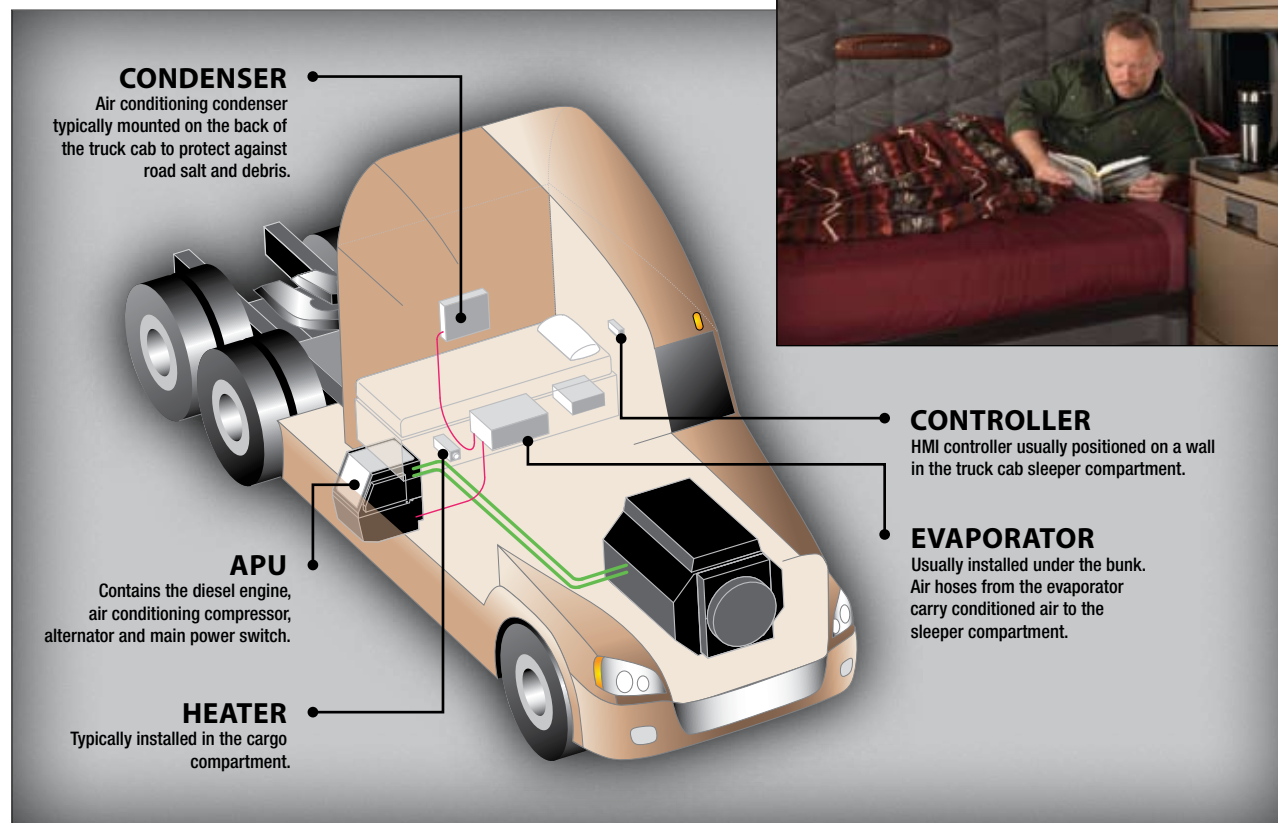
- Provides truck engine preheating
- Charges the battery
- Offers sleeper compartment climate control
- Supplies electric power with an optional inverter
- Reduces engine wear and tear
- Decreases the frequency and cost of maintenance and repairs
- Conforms to newly enacted anti-idling laws and restrictions

Precise temperature management is within reach.

The Human Machine Interface (HMI) controller, installed in the truck cab, manages temperature for maximum comfort. You can easily set the system to start and stop as specified, reducing overall engine run-time and lowering fuel consumption.

Saving money is the bottom line.

Regular idling costs you money, both in the fuel that's consumed and in the resulting maintenance required. With the TriPac APU controlling the temperature of your cab when parked, you can save up to 85% of the truck's overall operating costs.



Competitive financing available through Daimler Truck Financial. For the Freightliner Trucks Dealer nearest you, call 1-800-FTL-HELP. www.freightlinertucks.com. 20M, 3/09 FTL/MC-B-911. Specifications are subject to change without notice. Freightliner Trucks is registered to ISO 9001:2000 and ISO 14001:2004. © 2009. Daimler Trucks North America LLC. All rights reserved. Freightliner Trucks is a division of Daimler Trucks North America LLC, a Daimler company.